

Snowman With Tree Tag Ornament



Kellie's Designs
Original Machine Embroidery Designs
<https://kelliesdesigns.net>

Ornament Supplies Needed

*Regular embroidery supplies, stabilizer, thread, scissors etc.
(Note: I like cutaway stabilizer for most ITH projects unless otherwise indicated. I find that it provides more stability to the finished product.

*Vinyl or cork for ornament base - felt or vinyl for appliqué.

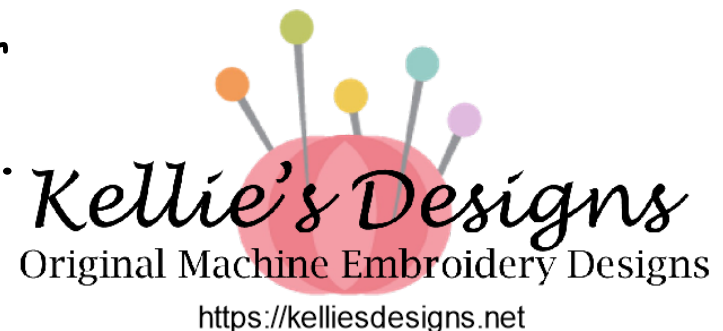
*Small sharp appliqué scissors and scissors for cutting out your ornament.

*Hole punch for grommet or eyelet

*1 grommet set or eyelet for each ornament

*Twine or jute and beads for hanger

***My supplies are listed at the end.**



Snowman With Tree Tag Ornament

Product Name:
500-629-C

Number of different
colors used in sewout: 11
Size: 2.54"(w) X 3.87"(h)
(64.4 X 98.2mm)
Total Stitches: 6191

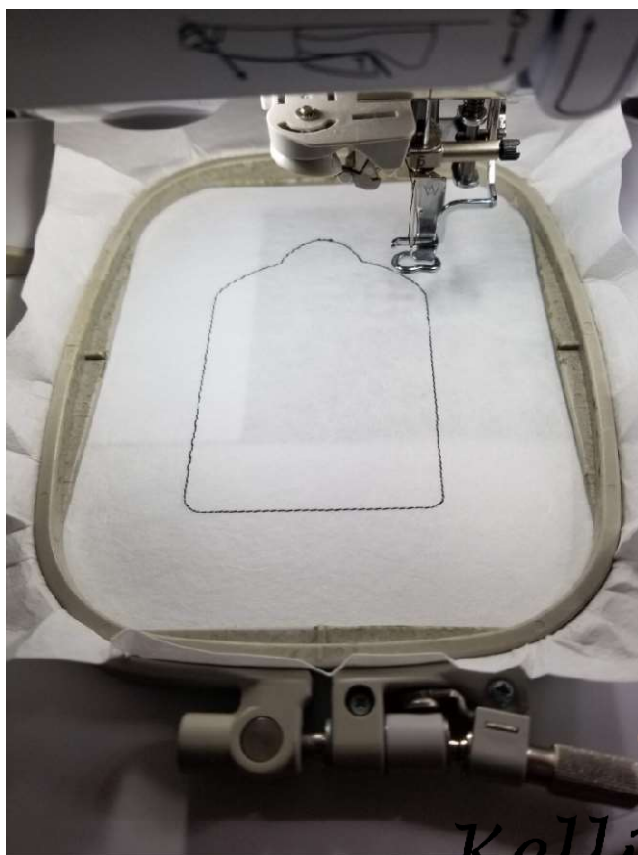


Kellie's Designs
Original Machine Embroidery Designs
<https://kelliesdesigns.net>

Snowman With Tree Tag Ornament

Color Change 1: Placement stitch - stitch directly on stabilizer and cover with cork or vinyl

Color Change 2: Placement line for inner background appliqué - stitch and cover with vinyl

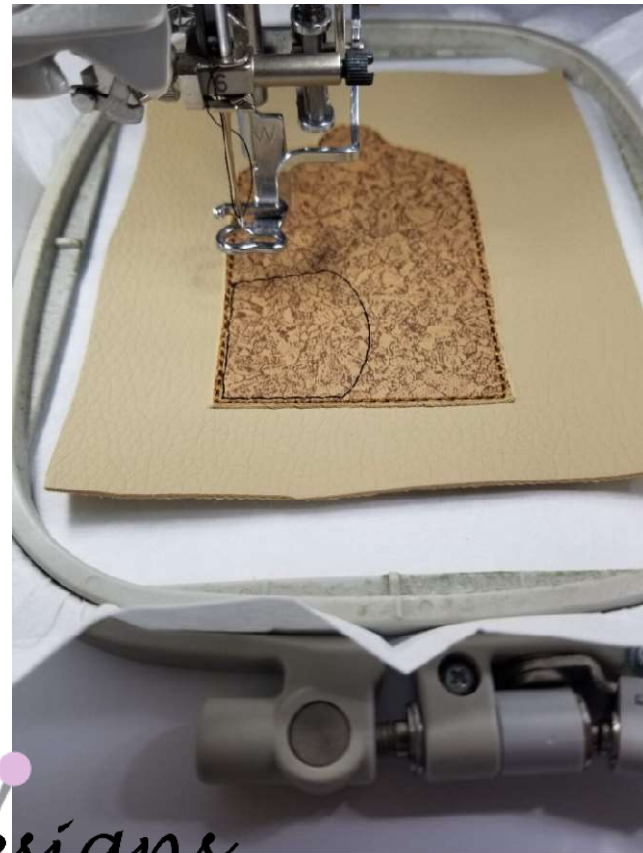


Snowman With Tree Tag Ornament

Color Change 3: Tack down for inner
background appliqué



Color Change 4: Placement line for
snowman

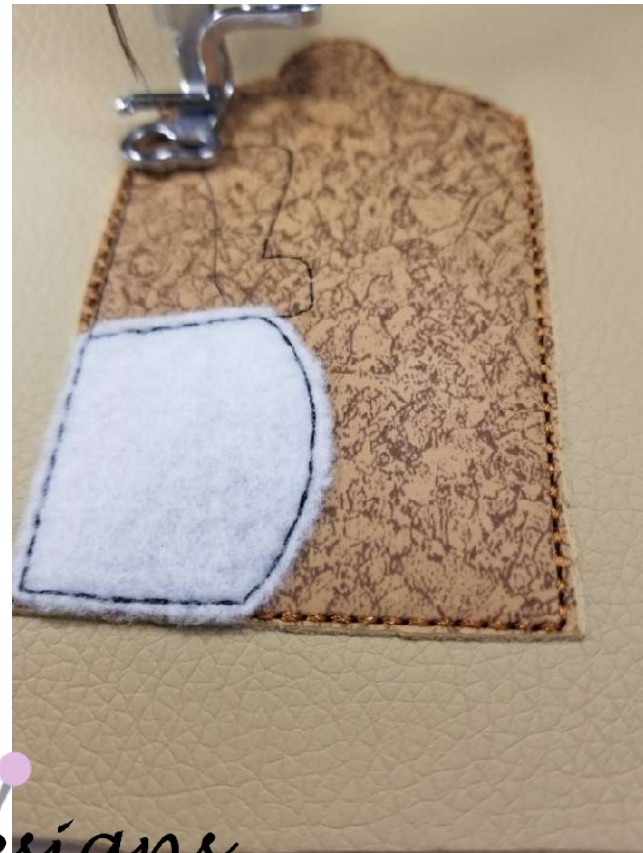


Kellie's Designs
Original Machine Embroidery Designs
<https://kelliesdesigns.net>

Snowman With Tree Tag Ornament

Color Change 5: Tack down for Snowman

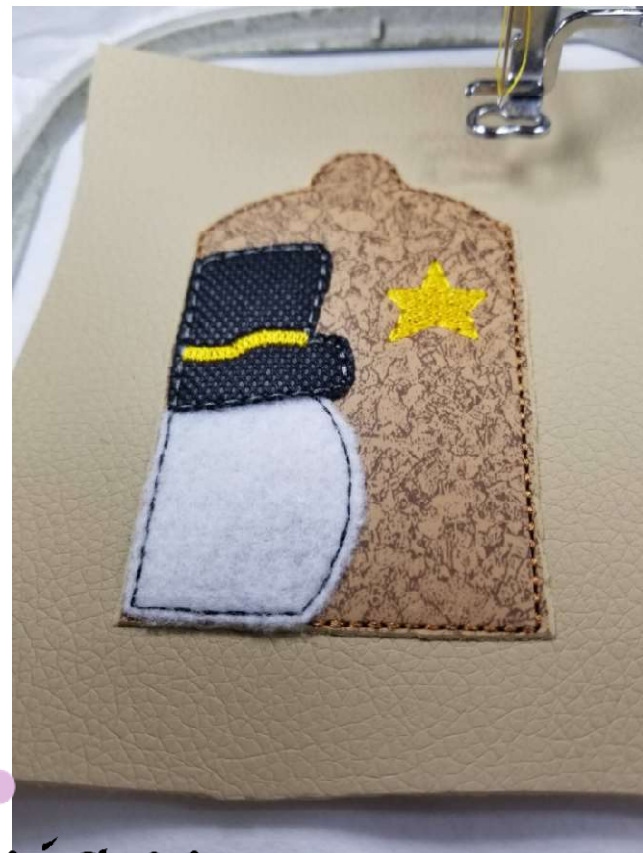
Color Change 6: Placement line for hat



Snowman With Tree Tag Ornament

Color Change 7: Tack down for hat

Color Change 8: Hat band and tree star

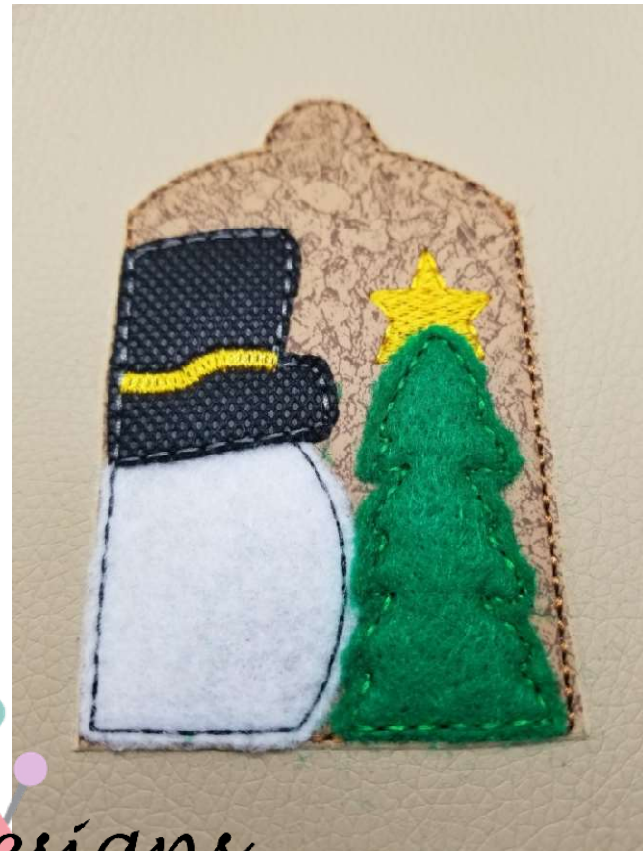
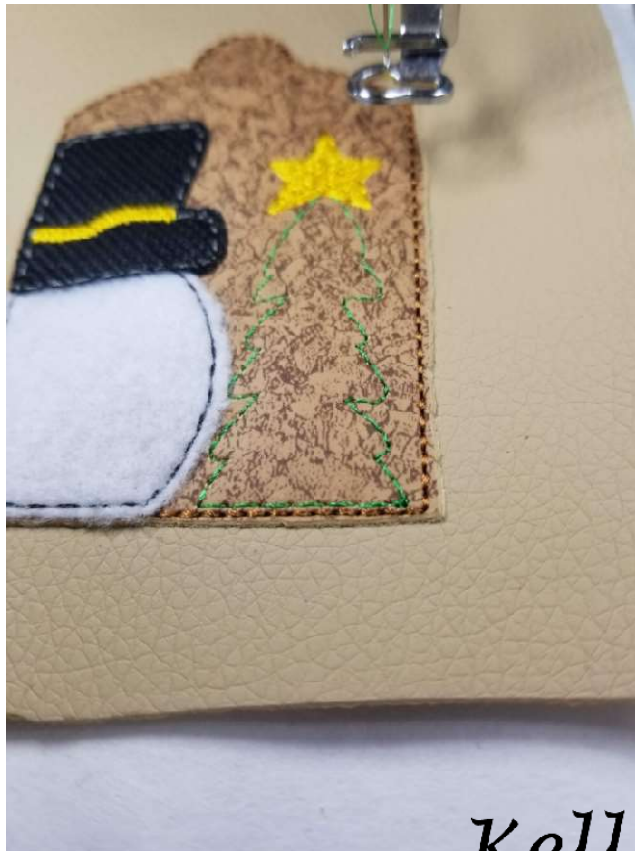


Kellie's Designs
Original Machine Embroidery Designs
<https://kelliesdesigns.net>

Snowman With Tree Tag Ornament

Color Change 9: Placement line for tree

Color Change 10: Tack down for tree

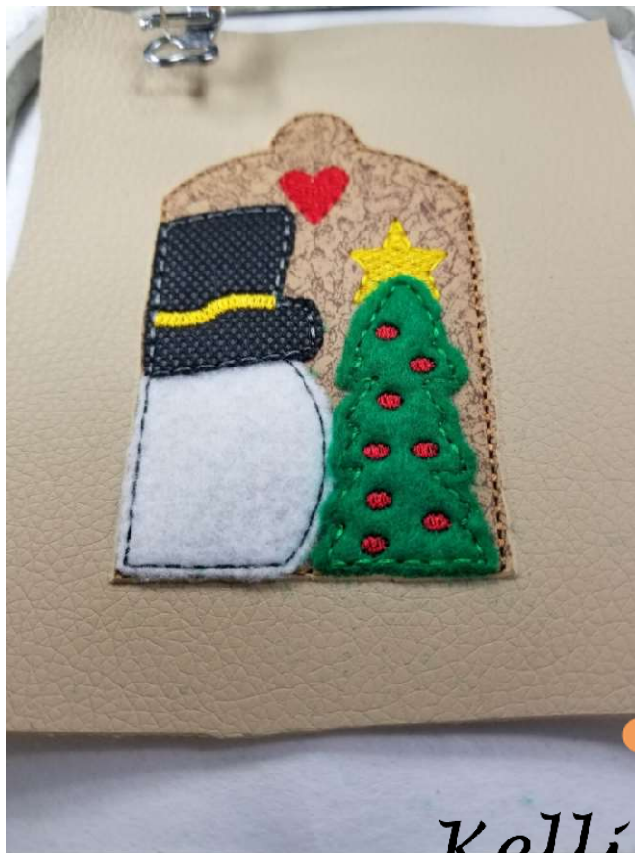


Kellie's Designs
Original Machine Embroidery Designs
<https://kelliesdesigns.net>

Snowman With Tree Tag Ornament

Color change 11: Heart and Ornament

Color change 12: Snowman nose



Kellie's Designs
Original Machine Embroidery Designs
<https://kelliesdesigns.net>

Snowman With Tree Tag Ornament

Color change 13: Snowman face



Color change 14: Final satin stitch for inner background applique



Kellie's Designs
Original Machine Embroidery Designs
<https://kelliesdesigns.net>

Snowman With Tree Tag Ornament

Color change 15: Placement stitch for grommet or eyelet



Color change 16: Place backing vinyl under hoop and run final bean stitch



Kellie's Designs
Original Machine Embroidery Designs
<https://kelliesdesigns.net>

Finishing Up



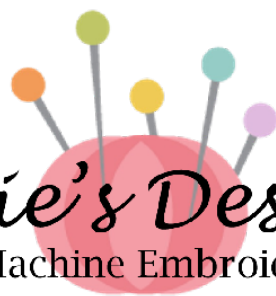
Once completed - carefully unhoop and trim around your ornament. Using the stitched placement guide - punch your hole and attach your grommet/eyelet. Would you like to learn how to make a bead hanger? It's super easy!! There is a FREE .pdf file in the files section of Kellie's Designs on Facebook.

Snowman With Tree Tag Ornament



That's it! Isn't your ornament precious?!?

Please post your completed pictures in our facebook group!!!


Kellie's Designs
Original Machine Embroidery Designs
<https://kelliesdesigns.net>

Links to supplies I used

The following are links to some of the products that I have used when making this project:

Cut away stabilizer: <https://amzn.to/3yX9bYQ>

Embroidery thread: <https://amzn.to/3Z6v2Ib>

Small appliqué scissors: <https://amzn.to/3JU9SbQ>

Kai serrated scissors: <https://amzn.to/3ni0Exl>

3/16 inch grommets: <https://amzn.to/3UZ8skn>

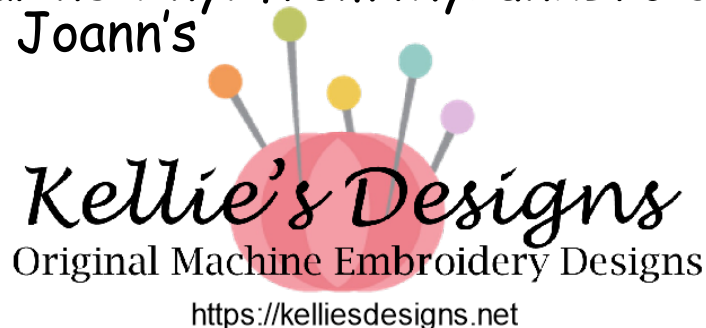
Crop-A-Dile (for setting grommets): <https://amzn.to/3Lm8iAj>

Jute: <https://amzn.to/41PZ2tG>

16mm wooden beads: <https://amzn.to/3UYHfOp>

Cork fabric and marine vinyl from MyPunkBroidery

Premium felt from Joann's



Thank you!!

I hope you enjoyed making your ornament! These are super quick and a great scrap buster. If you have any questions or encounter problems - PLEASE don't hesitate to ask. Also - our Facebook group is a great source of information and inspiration. Please feel free to share your completed project photos with us!!

Copyright 2023 - Kellie's Designs
Digitizing license from Whimsical Inklings.

Disclaimer: I am an Amazon affiliate - which means that I may receive a small commission based on qualified orders placed through links I share. This in no way impacts your pricing and I only recommend items that I personally have purchased and used.



Kellie's Designs
Original Machine Embroidery Designs
<https://kelliesdesigns.net>